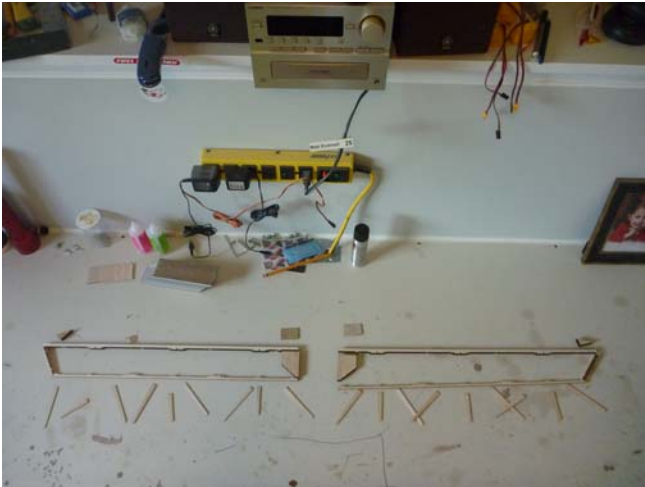


# AILERONS



It is very easy to make two left or two right ailerons. I suggest you lay all the parts out in a left and right layout.



Take the leading edge of the aileron and pin flat against a straight edge.



Glue in the control horn block with thin CA.  
Then place all the ribs in place. The ribs have a small burn hole; the burn hole goes down on the work surface. **DO NOT GLUE RIBS AT THIS TIME.**



Insert the trailing edge. When all the ribs are snug in their slots glue with thin CA.



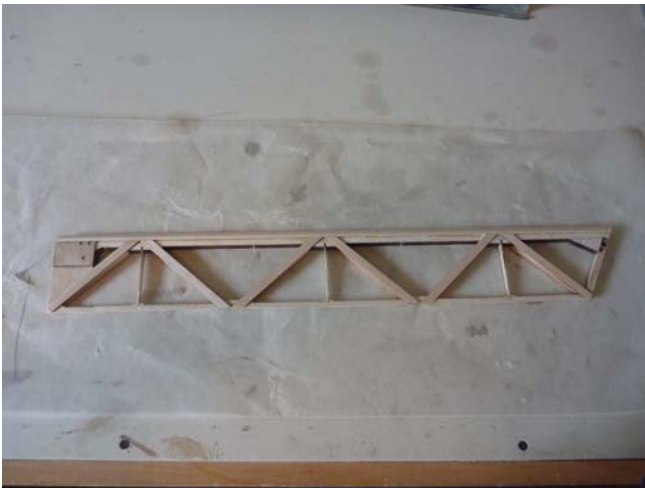
Glue the gusset at the tip of the aileron. The cut  $\frac{1}{2}$ " tri-stock to length.



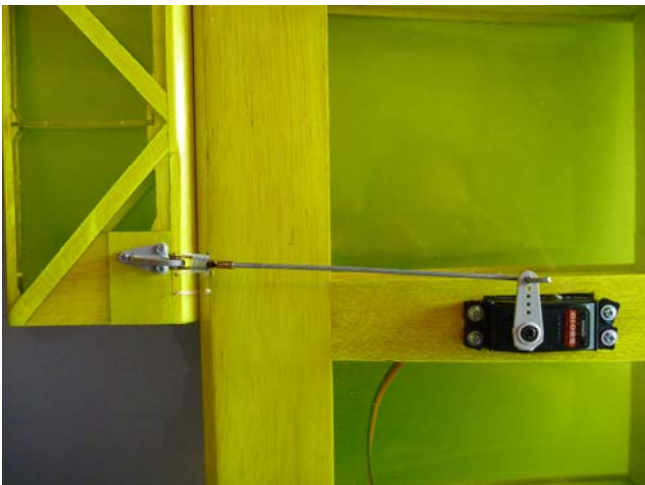
Centre the  $\frac{1}{2}$ " tri-stock on the leading edge and glue with medium CA. Sand the control horn block so it is flush with the ribs. Also sand the gusset at the wing tip.



Glue in all the cap strips and glue the control horn stiffener on both sides with medium CA.



Sand the aileron to a smooth finish. Then cover with your choice of covering.



Used here is the sewn type hinges. You can use conventional type hinges as well.